

航管監視最低高度圖
ATC Surveillance
Minimum Altitude Chart

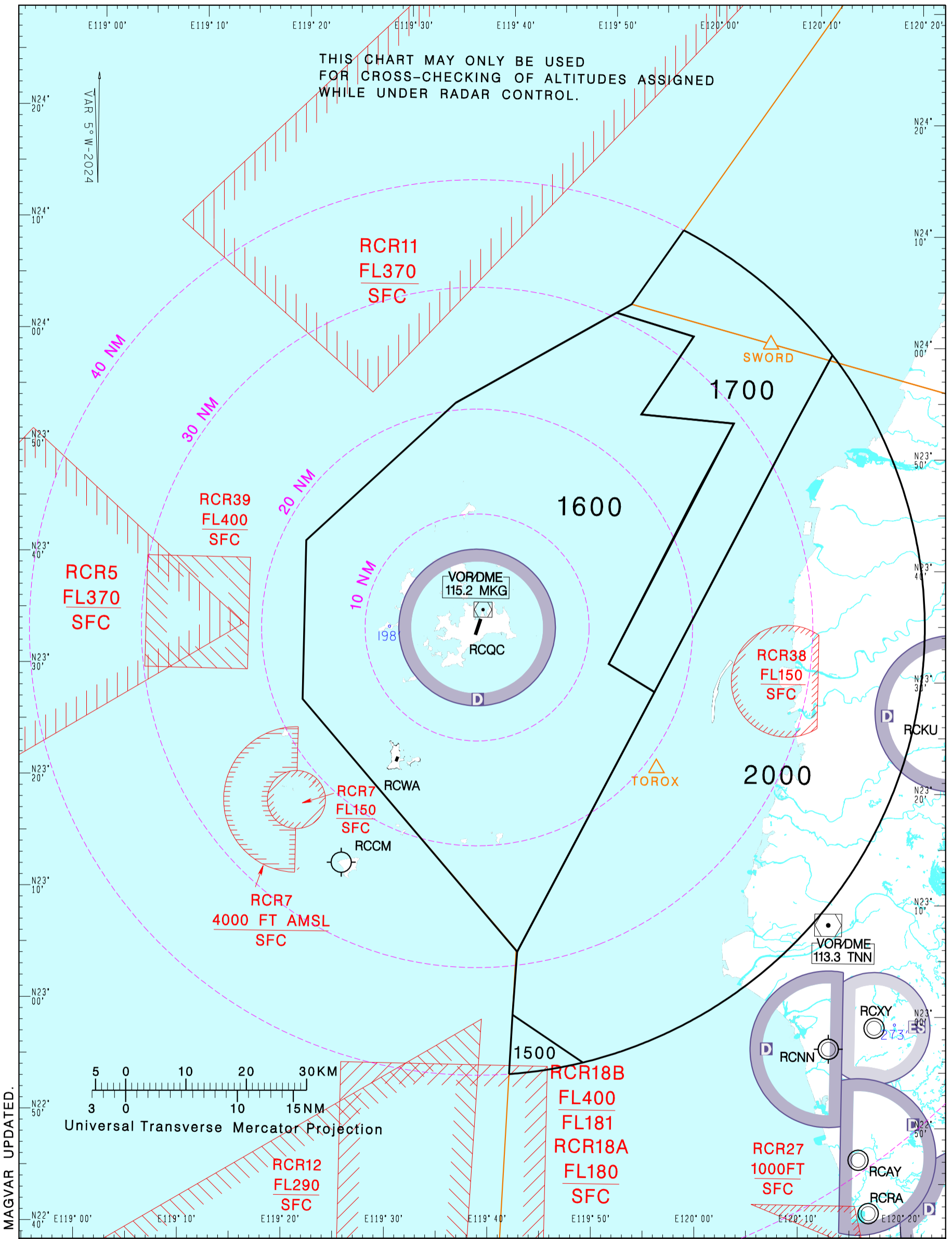
AD ELEV. Trans Level:FL130
RCQC 103FT Trans Alt:11,000'
RCWA 114FT

KAOSIUNG APP
128.1
129.9
234.8
299.6

MAGONG TOWER
118.3
236.6
ATIS 127.05

WANG-AN TOWER
118.9
121.5

澎湖機場 Penghu Aerodrome
望安機場 Wang-An Aerodrome



CHANGES: MVA SECTOR, MAGVAR UPDATED.

NOTE

- Distance circles are centred on the RCQC ARP (233407N 1193742E).
- Minimum altitudes are calculated taking into account of minimum clearance above terrain/obstacles. Radar control service cannot be provided to aircraft below the applicable minimum. Aircraft at designated altitude in relevant sector is not assured of radar contact.
- Altitudes, Levels, Heights are in feet.
- Only significant spot heights are shown.
- LOSS OF COMMUNICATION
 - SQUAWK 7600 immediately, and
 - follow AIP ENR 1.6.4 "Radio Communication Failure Procedures."